

VERTICAL STACK, VALVELESS FOUR-PIPE FAN COIL UNITS

The Whalen Innoline® 50/50 Four-Pipe System features all the advantages of a conventional four-pipe system but reduces pump and piping requirements by 50 percent.

During design day conditions, two pumps – each sized to carry 50 percent of the total flow – operate in parallel, delivering 100 percent of the hot or chilled water required.

Marginal days can be handled by one or two pumps circulating hot or chilled water through one or both heat-exchangers. This design allows pump and motor usage to be staged as conditions require, keeping energy demands at a minimum.



50% Capacity

Model	CFM	Fluid Velocity (FPS)	Cooling Capacity ¹			Heating Capacity ²	
			EWT (°F)	TC (Btu/hr)	SC (Btu/hr)	EWT (°F)	TC (Btu/hr)
W3022	170	6.0	45	4958	4237	140	8363
W4022	200	6.0	45	5,834	4,985	140	9,838
W6022	300	6.0	45	8,249	6,227	140	14,976
W6022X	300	6.0	45	9,528	6,682	140	14,997
W8022	400	6.0	45	11,692	8,889	140	16,797
W10022	500	6.0	45	12,562	9,806	140	19,804
W12022	600	6.0	45	15,710	12,531	140	23,771
W16022	800	6.0	45	20,651	16,971	140	30,581

100% Capacity

Model	CFM	Fluid Velocity (FPS)	Cooling Capacity ¹			Heating Capacity ²	
			EWT (°F)	TC (Btu/hr)	SC (Btu/hr)	EWT (°F)	TC (Btu/hr)
W3022	340	6.0	45	9917	8474	140	16726
W4022	400	6.0	45	11,668	9,970	140	19,677
W6022	600	6.0	45	16,499	12,455	140	29,953
W6022X	600	6.0	45	19,057	13,365	140	29,994
W8022	800	6.0	45	23,384	17,778	140	33,595
W10022	1000	6.0	45	22,612	17,651	140	35,648
W12022	1200	6.0	45	28,278	22,555	140	42,788
W16022	1600	6.0	45	37,173	30,549	140	55,047

¹ Rated in accordance with ARI Standard 440. Cooling capacities based on 80°F DB/67°F WB entering air, 45°F entering water, 10°F water temperature rise

² Water heating coils rated at 70°F DB entering air, 140°F entering water, 20°F water temperature drop and high fan speed.

General Data

	W3022	W4022	W6022	W8022	W10022	W12022	W16022
Operating (lbs.)	215	215	215	280	280	310	310
Shipping (lbs.)	215	215	215	280	280	310	310
4-Pipe Fan Cycle W x H x D	17 x 27.5 x 0.5	17 x 27.5 x 0.5	17 x 27.5 x 0.5	25 x 27.5 x 0.5	25 x 27.5 x 0.5	29 x 27.5 x 0.5	29 x 27.5 x 0.5
Quantity	1	1	1	1	1	1	1
4-Pipe Face & Bypass W x H x D	7 x 33.5 x 0.5	7 x 33.5 x 0.5	9 x 33.5 x 0.5	9 x 33.5 x 0.5	9 x 33.5 x 0.5	11 x 33.5 x 0.5	11 x 33.5 x 0.5
Quantity	2	2	2	2	2	2	2

Innoline® 50/50 Four Pipe System

Electrical Data – Standard PSC Motor

Model	Supply Blower Motor			Single Point Power	
	Voltage	FLA	HP	MCA	MOPD
W3022	115/1/60	1.0	1/15	2.3	15
	265/1/60	0.5	1/12	1.1	15
W4022	115/1/60	1.0	1/15	2.3	15
	265/1/60	0.5	1/12	1.1	15
W5022	115/1/60	1.0	1/15	2.3	15
	265/1/60	0.5	1/12	1.1	15
W6022	115/1/60	1.0	1/15	2.3	15
	265/1/60	0.5	0.08	1.1	15
W4022X	115/1/60	1.0	1/15	2.3	15
	265/1/60	0.5	0.08	1.1	15
W5022X	115/1/60	1.0	1/15	2.3	15
	265/1/60	0.5	1/12	1.1	15
W6022X	115/1/60	1.0	1/15	2.3	15
	265/1/60	0.5	1/12	1.1	15
W8022	115/1/60	1.6	1/12	3.6	15
	265/1/60	0.7	0.11	1.6	15
W1022	115/1/60	1.6	1/12	3.6	15
	265/1/60	0.7	0.11	1.6	15
W12022	115/1/60	2.3	1/6	5.2	15
	265/1/60	0.9	1/6	2.0	15
W16022	115/1/60	3.0	1/5	6.8	15
	265/1/60	1.2	1/5	2.7	15

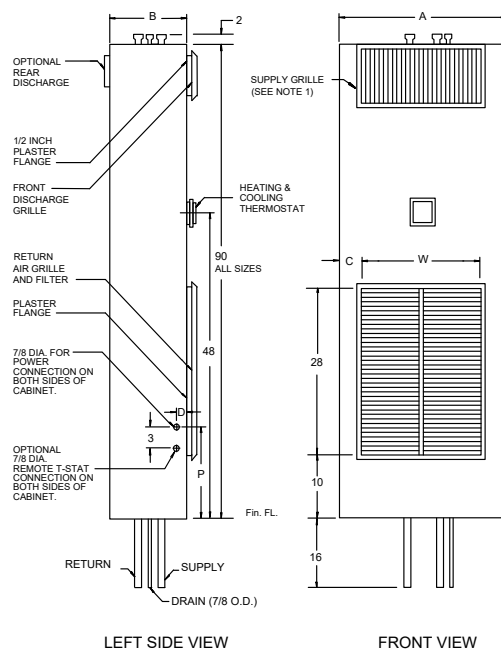
Electrical Data – Constant Torque EC Motor

Model	Supply Blower Motor			Single Point Power	
	Voltage	FLA	HP	MCA	MOPD
W3022	115/1/60	NA	NA	NA	NA
	265/1/60	NA	NA	NA	NA
W4022	115/1/60	NA	NA	NA	NA
	265/1/60	NA	NA	NA	NA
W5022	115/1/60	NA	NA	NA	NA
	265/1/60	NA	NA	NA	NA
W6022	115/1/60	NA	NA	NA	NA
	265/1/60	NA	NA	NA	NA
W4022X	115/1/60	NA	NA	NA	NA
	265/1/60	NA	NA	NA	NA
W5022X	115/1/60	NA	NA	NA	NA
	265/1/60	NA	NA	NA	NA
W6022X	115/1/60	NA	NA	NA	NA
	265/1/60	NA	NA	NA	NA
W8022	115/1/60	3.7	1/4	8.3	15
	265/1/60	2.2	1/4	5.0	15
W1022	115/1/60	3.7	1/4	8.3	15
	265/1/60	2.2	1/4	5.0	15
W12022	115/1/60	6.2	1/2	14.0	20
	265/1/60	3.2	1/2	7.2	15
W16022	115/1/60	6.2	1/2	14.0	20
	265/1/60	3.2	1/2	7.2	15

Cabinet Dimensions

Model	CFM	A	B	C	W	P	D	Min. Sleeve Size
W3022	300	24	14	3	18	17 1/2	4	8x10
W4022	400	24	14	3	18	17 1/2	4	8x10
W5022	500	24	14	3	18	17 1/2	4	8x10
W6022	600	24	14	3	18	17 1/2	4	8x10
W4022X	400	28	14	2	24	17 1/2	3 1/4	10x10
W5022X	500	28	14	2	24	17 1/2	3 1/4	10x10
W6022X	600	28	14	2	24	17 1/2	3 1/4	10x10
W8022	800	32	14	3	26	17 1/2	3 3/4	10x10
W1022	1000	32	14	3	26	17 1/2	3 3/4	10x10
W12022	1200	36	16	3	30	19 3/4	3 3/4	10x10
W16022	1600	36	16	3	30	19 3/4	3 3/4	10x10

All dimensions in inches



P.O. Box 1390 • Easton, MD 21601 USA
whalencompany.com

