

ORIGINAL INNOVATION TAKEN TO A NEW LEVEL

Over five decades ago, with its breakthrough engineering and proven advantages, the Whalen Innoline[®] Riser Fan Coil changed the conventional thinking about the design of heating and cooling systems. Since then, both the Innoline[®] Riser Fan Coil and The Whalen Company have continued to chart their own course, even as the vertically stacked market has become crowded with “me-too” valve control products.

The Innoline[®] Riser Fan Coil unit remains a one-of-kind innovation. And in the way it interacts with its customers, so is the Whalen Company. At Whalen, our communication with customers has led to a series of enhancements to the Innoline[®] Riser Fan Coil, as it has with our other products. That interaction involves listening carefully— being adaptable, flexible, and innovative. We don’t mass-produce Innoline[®] Riser Fan Coils in fixed sizes or configurations that limit customer choices. We manufacture them to individual specifications or needs, so that designs of buildings and spaces fit the aesthetic and economic priorities of the owners — not the constraints of an HVAC unit.



Innoline[®] Riser Fan Coil System Capacities

Model	CFM	Fluid Velocity (FPS)	Cooling Capacity ¹			Heating Capacity ²	
			EWT (°F)	TC (Btu/hr)	SC (Btu/hr)	EWT (°F)	TC (Btu/hr)
W200	222	6.0	45	5,834	4,985	140	9,838
W300	241	6.0	45	8,249	6,227	140	14,976
W300X	241	6.0	45	9,528	6,682	140	14,997
W400	362	6.0	45	11,692	8,889	140	16,797
W500	455	6.0	45	12,562	9,800	140	19,804
W600	580	6.0	45	15,710	12,531	140	23,771
W800	683	6.0	45	20,651	16,971	140	30,581

¹ Rated in accordance with ARI Standard 440. Cooling capacities based on 80°F DB/67°F WB entering air, 45°F entering water, 10°F water temperature rise

² Water heating coils rated at 70°F DB entering air, 140°F entering water, 20°F water temperature drop

General Data

	W202	W302	W302X	W402	W502	W602	W802
Operating Weight - 2-Pipe System (lbs.)	103	103	123	138	138	188	188
Operating Weight - 4-Pipe System (lbs.)	123	123	143	158	158	208	208
Shipping Weight - 2-Pipe System (lbs.)	115	115	135	150	150	200	200
Shipping Weight - 4-Pipe System (lbs.)	135	135	155	170	170	220	220
Filter Size (in.)	7 x 33.5 x 0.5	7 x 33.5 x 0.5	9 x 33.5 x 0.5	9 x 33.5 x 0.5	9 x 33.5 x 0.5	11 x 33.5 x 0.5	11 x 33.5 x 0.5
Filter Quantity	1	1	1	1	1	1	1

Innoline® Riser Fan Coils

2 Pipe Cabinet Dimensions

Model	CFM	A	B	C	D	E	F	G	Min. Sleeve Size
W202	200	12	14	2 1/2	1 1/2	2	8	2 3/4	3 1/2 x 5
W302	300	12	14	2 1/2	1 1/2	2	8	2 3/4	3 1/2 x 5
W302X	300	14	14	4	2 3/4	2	10	4 1/2	4 1/2 x 8
W402	400	16	14	4	2 3/4	3	10	4 1/2	4 1/2 x 8
W502	500	16	14	4	2 3/4	3	10	4 1/2	4 1/2 x 8
W602	600	18	16	4	2 3/4	3	12	4 1/2	8 x 10
W802	800	18	16	4	2 3/4	3	12	4 1/2	8 x 10

All dimensions in inches

4 Pipe Cabinet Dimensions

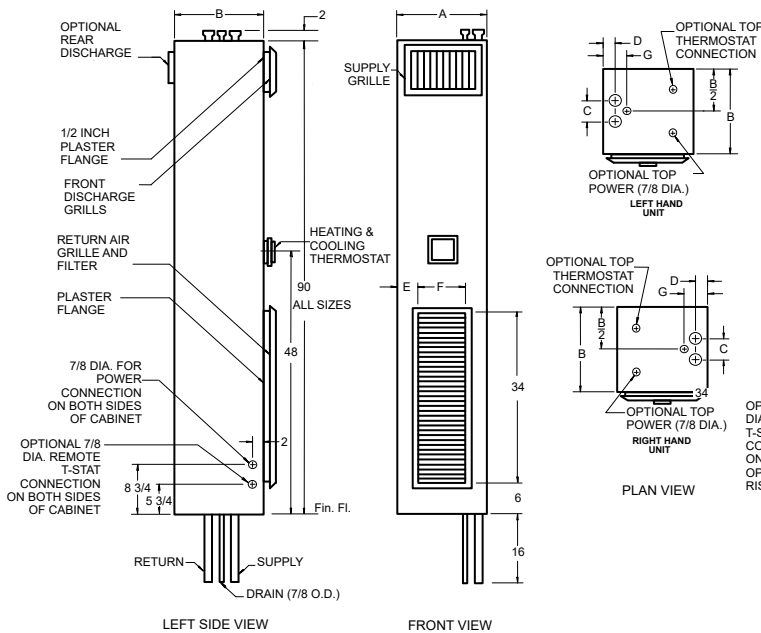
Model	CFM	A	B	C	D	E	F	G	P	T	Min. Sleeve Size
W204	200	12	14	2 1/2	1 1/2	2	8	2 3/4	2 1/2	3	3 1/2 x 5
W304	300	12	14	2 1/2	1 1/2	2	8	2 3/4	2 1/2	3	3 1/2 x 5
W304X	300	14	14	4	2 3/4	2	10	4 1/2	2 1/2	4	4 1/2 x 8
W404	400	16	16	4	2 3/4	3	10	4 1/2	3	4	4 1/2 x 8
W504	500	16	16	4	2 3/4	3	10	4 1/2	3	4	4 1/2 x 8
W604	600	18	16	4	2 3/4	3	12	4 1/2	3	6	8 x 10
W804	800	18	16	4	2 3/4	3	12	4 1/2	3	6	8 x 10

All dimensions in inches

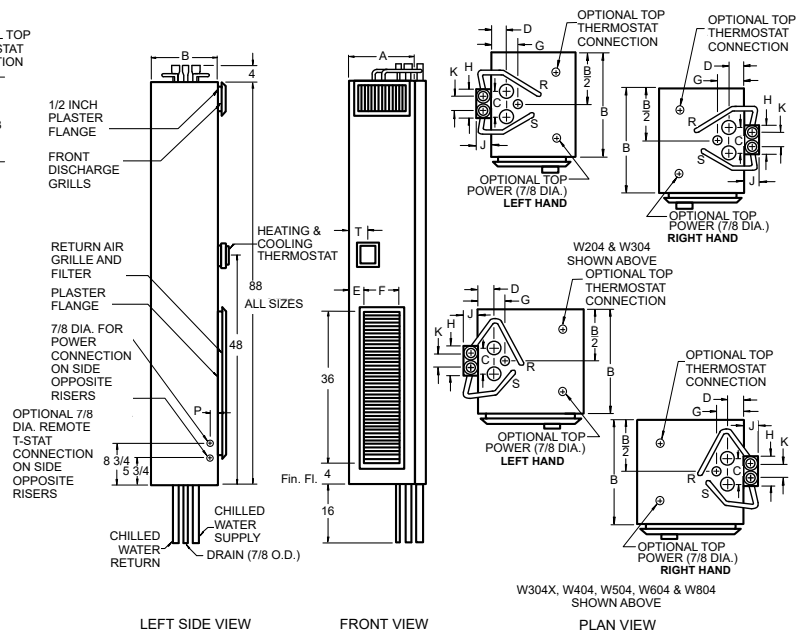
H.W. Riser Size	H	J	K
3/4	3 1/8	1 1/2	1 5/8
1	3 11/16	1 13/16	1 13/16
1 1/4	4 3/16	2 1/16	2 1/16
1 1/2	4 11/16	2 5/16	2 5/16

All dimensions in inches

2 Pipe Heating/Cooling Units with Fan Cycle Control



4 Pipe Heating/Cooling Units with Hot Water Risers



P.O. Box 1390 • Easton, MD 21601 USA
whalencompany.com



Innoline is a registered trademark of The Whalen Company. ©2014 The Whalen Company. All rights reserved.

WL010 rev. 01-20