

INTEGRATED THERMAL RECOVERY UNIT

Whispertherm® brings together Whalen’s field-proven Whisperpack® product with the means to deliver freshly-conditioned outdoor air. The Whispertherm® integrated thermal recovery unit benefits the environmentally conscious owner by efficiently introducing the outdoor air into the occupied space. Rather than directly discarding exhaust air from the occupied space, its energy is transferred to the incoming fresh air. Less energy is required to bring this fresh air to the indoor conditions.

True to our commitment to offer flexible products that meet the design of the building rather than forcing conformity around product limitations, the Whispertherm® unit may be applied to a variety of building designs. When combined with our Whisperpack® product line, owners benefit during the heating season by use of a hydronic heating air coil rather than reversing the refrigerant cycle. This allows for additional energy savings by turning off the compressor and diverting the condenser water to the air coil.



Whispertherm® with Whisperpack® Air Conditioning with Hydronic Heating Capacities

Model with EC Motor	AHRI Certified Performance ASHRAE / ANSI / AHRI / ISO Standard 13256-1				Heating GPM	Entering Liquid Temp Heating 105°F	
	CFM	GPM	Water Loop Heat Pump			Capacity Btuh	EER Btuh / W
			Cooling 86°F				
			Capacity Btuh	EER Btuh / W			
V(T,N)-C-204*D	290	1.5	6,400	13.70	1.5	7,087	239
V(T,N)-C-304*D	345	2.5	9,300	14.00	2.5	8,769	317
V(T,N)-C-404*D	465	3.3	11,700	13.80	3.3	9,883	371
V(T,N)-C-504*D	540	3.9	14,200	15.70	3.9	14,336	482
V(T,N)-C-604*D	650	4.5	17,800	14.60	4.5	16,884	603
V(T,N)-C-804*D	865	6.0	22,800	13.00	6.0	22,065	829
V(T,N)-C-814*D	830	6.0	22,800	15.50	6.0	21,483	760
V(T,N)-C-1004*D	1045	7.5	28,200	13.50	7.5	27,629	944
V(T,N)-C-1204*D	1100	9.0	32,600	13.60	9.0	31,791	1124

Cooling based upon 80.6°F DB, 66.2°F WB entering air temperature

Heating based upon 68°F DB, 59°F WB entering air temperature

Performance based upon 208/60/1 voltage

Whispertherm® with Whisperpack® Chassis

Chassis General Data

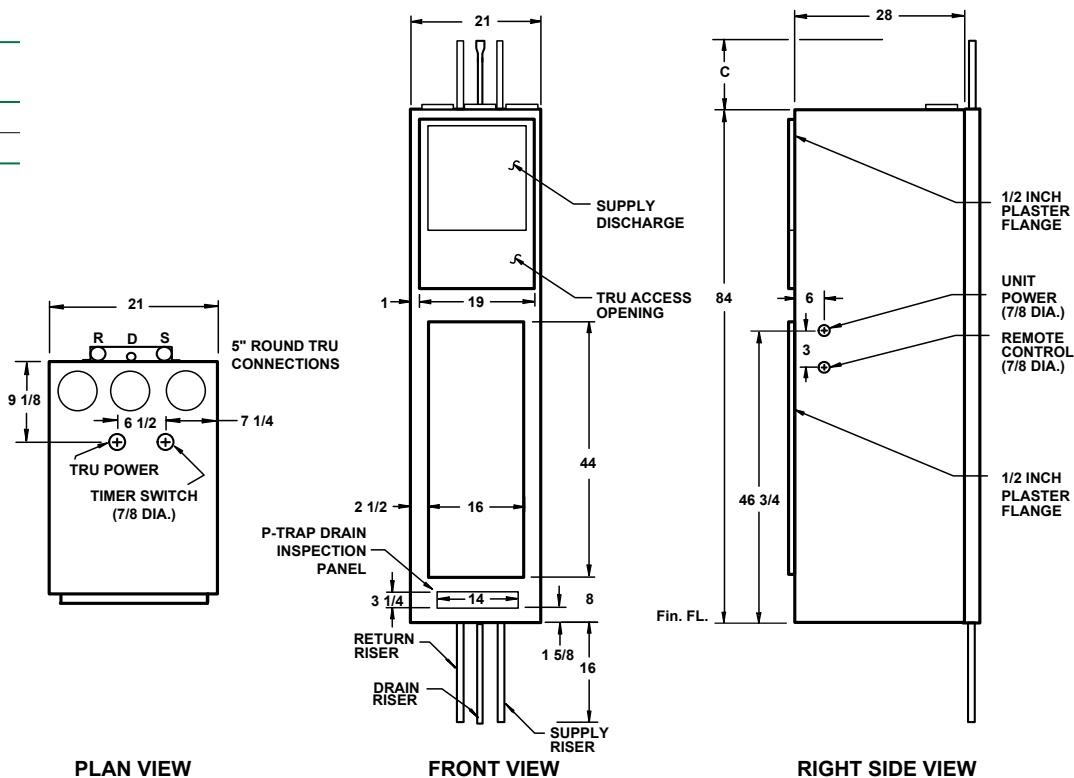
Component	Models								
	V(T,N)-C-0204	V(T,N)-C-0304	V(T,N)-C-0404	V(T,N)-C-0504	V(T,N)-C-0604	V(T,N)-C-0804	V(T,N)-C-0814	V(T,N)-C-1004	V(T,N)-C-1204
Compressor Type	Recip	Recip	Recip	Recip	Recip	Rotary	Scroll	Scroll	Scroll
Compressor Quantity	1	1	1	1	1	1	1	1	1
Chassis Operating Weight (lbs.)	82	84	87	129	130	142	177	177	188
Cabinet Operating Weight (lbs.)	260	260	260	260	260	260	290	290	290
Chassis Shipping Weight (lbs.)	88	90	93	135	136	148	183	183	194
Cabinet Shipping Weight (lbs.)	272	272	272	272	272	272	302	302	302
Filter Size	13 x 24 x 1	13 x 24 x 1	13 x 24 x 1	15 x 28 x 1	15 x 28 x 1	15 x 28 x 1	17 x 40 x 1	17 x 40 x 1	17 x 40 x 1
Filter Quantity	1	1	1	1	1	1	1	1	1

Cabinet Dimensions

	Models								
	V(T,N)-C-0204	V(T,N)-C-0304	V(T,N)-C-0404	V(T,N)-C-0504	V(T,N)-C-0604	V(T,N)-C-0804	V(T,N)-C-0814	V(T,N)-C-1004	V(T,N)-C-1204
Width (in.)	21	21	21	21	21	21	21	21	21
Depth (in.)	28	28	28	28	28	28	29	29	29
Height (in.)	84	84	84	84	84	84	93	93	93

Riser Length	C
9 Foot	8
10 Foot	20

All dimension in inches



P.O. Box 1390 • Easton, MD 21601 USA
whalencompany.com

