

## INTEGRATED THERMAL RECOVERY UNIT

Whispertherm® brings together Whalen's field-proven Whisperpack® product with the means to deliver freshly-conditioned outdoor air. The Whispertherm® integrated thermal recovery unit benefits the environmentally conscious owner by efficiently introducing the outdoor air into the occupied space. Rather than directly discarding exhaust air from the occupied space, its energy is transferred to the incoming fresh air. Less energy is required to bring this fresh air to the indoor conditions.

True to our commitment to offer flexible products that meet the design of the building rather than forcing conformity around product limitations, the Whispertherm® unit may be applied to a variety of building designs. When combined with our Whisperpack® product line, owners benefit during the heating season by use of a hydronic heating air coil rather than reversing the refrigerant cycle. This allows for additional energy savings by turning off the compressor and diverting the condenser water to the air coil.



### Whisperpack® Air Conditioning

| Model with EC Motor | AHRI Certified Performance ASHRAE / ANSI / AHRI / ISO Standard 13256-1 |     |                      |              | Heating GPM | Entering Liquid Temp Heating 105°F |              |
|---------------------|--|-----|----------------------|--------------|-------------|------------------------------------|--------------|
|                     | CFM  | GPM | Water Loop Heat Pump |              |             |                                    |              |
|                     |  |     | Cooling 86°F         |              |             |                                    |              |
|                     |  |     | Capacity Btuh        | EER Btuh / W |             | Capacity Btuh                      | EER Btuh / W |
| 204                 | 290  | 1.5 | 6,400                | 13.70        | 1.5         | 7,087                              | 239          |
| 304                 | 345  | 2.5 | 9,300                | 14.00        | 2.5         | 8,769                              | 317          |
| 404                 | 465  | 3.3 | 11,700               | 13.80        | 3.3         | 9,883                              | 371          |
| 504                 | 540  | 3.9 | 14,200               | 15.70        | 3.9         | 14,336                             | 482          |
| 604                 | 650  | 4.5 | 17,800               | 14.60        | 4.5         | 16,884                             | 603          |
| 804                 | 865  | 6.0 | 22,800               | 13.00        | 6.0         | 22,065                             | 829          |

Cooling based upon 80.6°F DB, 66.2°F WB entering air temperature  
 Heating based upon 68°F DB, 59°F WB entering air temperature  
 Performance based upon 208/60/1 voltage

### Whisperpack® Hydronic Heating

| Data based on 70°F Entering DB and EC fan motor |     |           |     | Entering Water Temperature |         |                |         |
|---|-----|-----------|-----|----------------------------|---------|----------------|---------|
|   |     |           |     | 105°F                      |         | 120°F          |         |
| Unit Size                                       | GPM | Heat Coil | CFM | Capacity Btu/h             | LAT, °F | Capacity Btu/h | LAT, °F |
| 204   | 1.5 | 2 row     | 270 | 7,087                      | 93      | 10,016         | 103     |
|   |     | 3 row     | 260 | 8,361                      | 97      | 11,797         | 108     |
| 304   | 2.5 | 2 row     | 300 | 8,769                      | 95      | 12,389         | 105     |
|   |     | 3 row     | 290 | 9,837                      | 98      | 13,861         | 109     |
| 404   | 3.3 | 2 row     | 360 | 9,883                      | 94      | 14,142         | 105     |
|   |     | 3 row     | 345 | 11,263                     | 98      | 15,904         | 109     |
| 504   | 3.9 | 2 row     | 475 | 14,366                     | 97      | 20,113         | 108     |
|   |     | 3 row     | 460 | 16,815                     | 102     | 23,583         | 115     |
| 604   | 4.5 | 2 row     | 600 | 16,884                     | 96      | 23,707         | 106     |
|   |     | 3 row     | 590 | 19,942                     | 100     | 27,910         | 112     |
| 804   | 6.0 | 2 row     | 800 | 22,065                     | 94      | 31,046         | 104     |
|   |     | 3 row     | 790 | 26,689                     | 99      | 37,436         | 111     |

### Chassis General Data

|                                | VP-C-204*D  | VP-C-304*D  | VP-C-404*D  | VP-C-504*D  | VP-C-604*D  | VP-C-804*D  |
|--------------------------------|-------------|-------------|-------------|-------------|-------------|-------------|
| Compressor Type                | Recip       | Recip       | Recip       | Recip       | Recip       | Scroll      |
| Compressor Quantity            | 1           | 1           | 1           | 1           | 1           | 1           |
| Whisperpack® Chassis           | 82          | 84          | 87          | 129         | 130         | 142         |
| Operating Weight (lbs.)        | 260         | 260         | 260         | 260         | 260         | 260         |
| Whisperpack® Chassis           | 88          | 90          | 93          | 135         | 136         | 148         |
| Shipping Weight (lbs.)         | 272         | 272         | 272         | 272         | 272         | 272         |
| Cabinet Shipping Weight (lbs.) | 13 x 24 x 1 | 13 x 24 x 1 | 13 x 24 x 1 | 15 x 28 x 1 | 15 x 28 x 1 | 15 x 28 x 1 |
| Filter Size                    | 1           | 1           | 1           | 1           | 1           | 1           |
| Filter Quantity                | 1           | 1           | 1           | 1           | 1           | 1           |

# Whispertherm® with Whisperpack® Chassis

## Electrical Data - Constant Torque EC Motor

| Size (Tons) | Voltage  | Compressor |      |     | Supply Blower Motor |     | Minimum Circuit Ampacity | MOPD |
|-------------|----------|------------|------|-----|---------------------|-----|--------------------------|------|
|             |          | RLA        | LRA  | QTY | FLA                 | HP  |                          |      |
| 0204 (0.50) | 208-60-1 | 2.5        | 17.7 | 1   | 2.2                 | 1/4 | 5.3                      | 15   |
|             | 230-60-1 | 2.5        | 17.7 | 1   | 2.2                 | 1/4 | 5.3                      | 15   |
|             | 265-60-1 | 2.6        | 13.5 | 1   | 2.2                 | 1/4 | 5.5                      | 15   |
| 0304 (0.75) | 208-60-1 | 5.1        | 22.0 | 1   | 2.2                 | 1/4 | 8.6                      | 15   |
|             | 230-60-1 | 5.1        | 22.0 | 1   | 2.2                 | 1/4 | 8.6                      | 15   |
|             | 265-60-1 | 4.5        | 22.0 | 1   | 2.2                 | 1/4 | 7.8                      | 15   |
| 0404 (1.00) | 208-60-1 | 6.4        | 25.0 | 1   | 2.2                 | 1/4 | 10.2                     | 15   |
|             | 230-60-1 | 6.4        | 25.0 | 1   | 2.2                 | 1/4 | 10.2                     | 15   |
|             | 265-60-1 | 5.1        | 22.0 | 1   | 2.2                 | 1/4 | 8.6                      | 15   |
| 0504 (1.25) | 208-60-1 | 4.8        | 26.0 | 1   | 2.2                 | 1/4 | 8.2                      | 15   |
|             | 230-60-1 | 4.8        | 26.0 | 1   | 2.2                 | 1/4 | 8.2                      | 15   |
|             | 265-60-1 | 4.2        | 25.0 | 1   | 2.2                 | 1/4 | 7.4                      | 15   |
| 0604 (1.50) | 208-60-1 | 7.7        | 38.0 | 1   | 2.2                 | 1/4 | 11.8                     | 15   |
|             | 230-60-1 | 7.7        | 38.0 | 1   | 2.2                 | 1/4 | 11.8                     | 15   |
|             | 265-60-1 | 7.1        | 30.0 | 1   | 2.2                 | 1/4 | 11.0                     | 15   |
| 0804 (2.00) | 208-60-1 | 10.3       | 43.0 | 1   | 4.6                 | 1/2 | 17.4                     | 25   |
|             | 230-60-1 | 10.3       | 43.0 | 1   | 4.6                 | 1/2 | 17.4                     | 25   |
|             | 265-60-1 | 8.3        | 54.0 | 1   | 3.2                 | 1/2 | 13.6                     | 20   |

## Electrical Data - Constant Volume EC Motor

| Size (Tons) | Voltage  | Compressor |      |     | Supply Blower Motor |     | Minimum Circuit Ampacity | MOPD |
|-------------|----------|------------|------|-----|---------------------|-----|--------------------------|------|
|             |          | RLA        | LRA  | QTY | FLA                 | HP  |                          |      |
| 0404 (1.00) | 208-60-1 | 6.4        | 25.0 | 1   | 2.7                 | 1/3 | 10.7                     | 15   |
|             | 230-60-1 | 6.4        | 25.0 | 1   | 2.7                 | 1/3 | 10.7                     | 15   |
|             | 265-60-1 | 5.1        | 22.0 | 1   | 3.2                 | 1/2 | 9.6                      | 15   |
| 0504 (1.25) | 208-60-1 | 4.8        | 26.0 | 1   | 2.7                 | 1/3 | 8.7                      | 15   |
|             | 230-60-1 | 4.8        | 26.0 | 1   | 2.7                 | 1/3 | 8.7                      | 15   |
|             | 265-60-1 | 4.2        | 25.0 | 1   | 3.2                 | 1/2 | 8.4                      | 15   |
| 0604 (1.50) | 208-60-1 | 7.7        | 38.0 | 1   | 2.7                 | 1/3 | 12.3                     | 20   |
|             | 230-60-1 | 7.7        | 38.0 | 1   | 2.7                 | 1/3 | 12.3                     | 20   |
|             | 265-60-1 | 7.1        | 30.0 | 1   | 3.2                 | 1/2 | 12.0                     | 15   |
| 0804 (2.00) | 208-60-1 | 10.3       | 43.0 | 1   | 3.9                 | 1/2 | 16.7                     | 25   |
|             | 230-60-1 | 10.3       | 43.0 | 1   | 3.9                 | 1/2 | 16.7                     | 25   |
|             | 265-60-1 | 8.3        | 54.0 | 1   | 3.2                 | 1/2 | 13.6                     | 20   |

## TRU Electrical Data

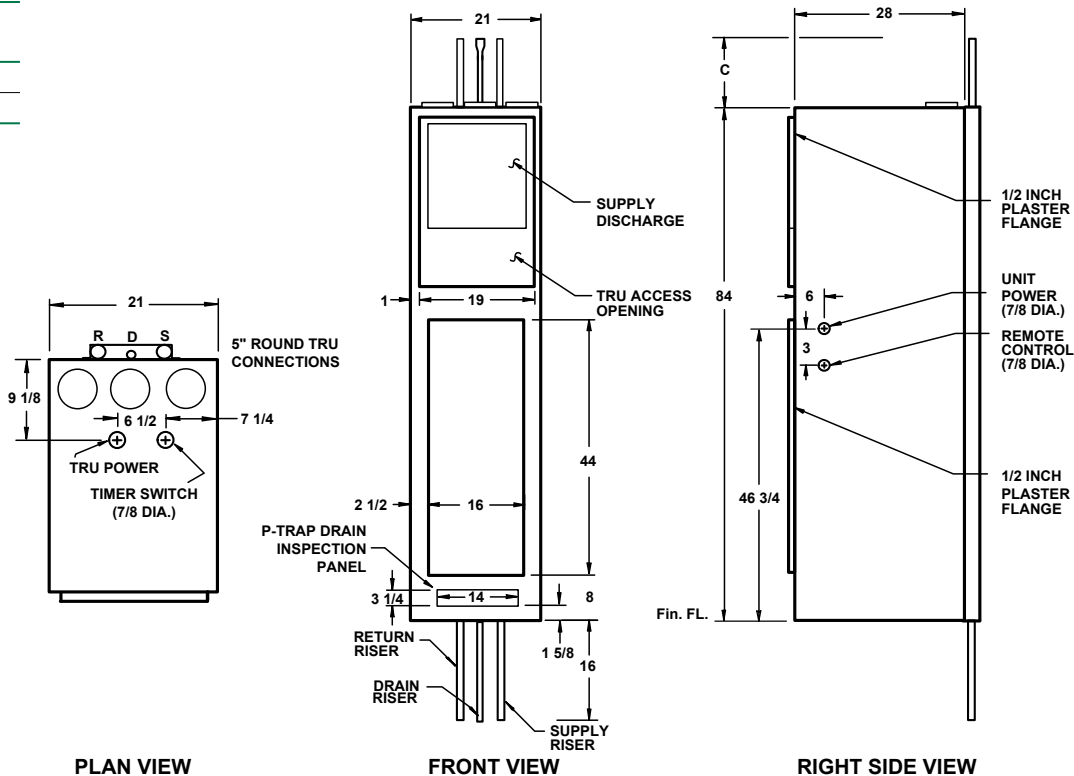
| Nameplate Voltage (V) | Nameplate FLA (A) | Minimum Circuit Ampacity (A) | MOPD (A) |
|-----------------------|-------------------|------------------------------|----------|
| 120                   | 1.54              | 1.54                         | 15       |

## Cabinet Dimensions

|              | V(T,R)-C-0204 | V(T,R)-C-0304 | V(T,R)-C-0404 | V(T,R)-C-0504 | V(T,R)-C-0604 | V(T,R)-C-0804 |
|--------------|---------------|---------------|---------------|---------------|---------------|---------------|
| Width (in.)  | 21            | 21            | 21            | 21            | 21            | 21            |
| Depth (in.)  | 28            | 28            | 28            | 28            | 28            | 28            |
| Height (in.) | 84            | 84            | 84            | 84            | 84            | 84            |

All dimension in inches

| Riser Length | C  |
|--------------|----|
| 9 Foot       | 8  |
| 10 Foot      | 20 |



P.O. Box 1390 • Easton, MD 21601 USA  
whalencompany.com

