



Commercial Product Line

---



# Commercial Product Line

- Water Source Heat Pumps
- Fan Coils

# The Industry's First Choice for Multi-Story Heating and Cooling

Established in 1962, The Whalen Company is one of America's most innovative leaders in the commercial HVAC industry. As originators of vertical stacked fan coil units and heat pumps, we are committed to offering practical solutions for developers, architects and builders that reduce costs and improve performance.

The history of The Whalen Company demonstrates our commitment to purpose-driven engineering and operational efficiency. With one of the broadest portfolios of products offered of any manufacturer, The Whalen Company has the product to meet the needs of virtually any building.



## WATER-SOURCE HEAT PUMP PRODUCTS

### Closetline® Compact Packaged Unit



- 15 EER
- 275 to 2,000 CFM
- Quiet operation
- Solid state control with 8 safeties standard
- Externally mounted control valves
- Optional refrigerant detection system
- Optional EC constant torque motor
- Optional E-coated air coil for corrosion protection

### Closetline® 1-Stage Packaged Unit



- 15 EER
- 275 to 1,950 CFM
- Quiet operation
- Solid state control with 8 safeties standard
- Optional factory mounted control valves
- Optional refrigerant detection system
- Optional hybrid heating and cooling
- Optional EC constant torque motor
- Optional E-coated air coil for corrosion protection

### Closetline® 2-Stage Packaged Unit



- 17 EER
- 600 to 1,900 CFM
- Quiet operation
- Solid state control with 8 safeties standard
- EC constant volume motor
- Stainless steel drain pan standard
- Factory mounted modulating control valves
- Optional refrigerant detection system
- Optional E-coated air coil for corrosion protection

### Whisperline® Vertical Stack



- 14.0 EER
- 200 to 1,200 CFM
- Slide-out chassis for ease of service
- Optional ECM variable speed motor
- Optional closed cell or foil faced insulation
- DX cooling with hydronic heating
- Stainless steel drain pan standard
- Factory mounted internal water options
- Microprocessor controls standard

### Whisperline® Ducted Vertical



- 14.0 EER
- 200 to 1,200 CFM
- Slide-out chassis for ease of service
- Optional ECM variable speed motor
- Optional closed cell or foil faced insulation
- Stainless steel drain pan standard
- Factory mounted internal water options
- Microprocessor controls standard

### Whispertherm® Vertical Stack



- 14.0 EER
- 200 to 1,200 CFM
- Integrated core HRV/ERV module for outside air ventilation
- Reverse cycle WSHP or DX cooling with hydronic heating
- Slide-out chassis for ease of service
- Optional ECM variable speed motor
- Optional closed cell or foil faced insulation
- Stainless steel drain pan standard
- Factory mounted internal water options
- Microprocessor controls standard

### Whisperline® Two-Stage Vertical Stack



- 18.5 EER
- 800 to 1,200 CFM
- 2-stage scroll compressor and ECM motor resulting in superior efficiency and comfort
- Best-in-class sound levels and quiet operation
- Service friendly features for easy repair and installation
- Floating compressor design and cabinet isolation pad to minimize vibration transmission

### Whisperline® Console



- 14.0 EER
- 200 to 1,200 CFM
- Advanced digital auto change-over unit mounted control with temperature display, and speed selection
- Microprocessor controls standard
- Right or left-hand piping arrangement
- Powder-painted drain pan



## FAN COIL PRODUCTS



### Inteli-line® Vertical Stack Fan Coil

- 200 to 1,200 CFM
- 2-pipe or 4-pipe
- Optional electric heat
- Fixed or slide-out chassis
- Optional master / slave configuration
- Standard PSC motor
- Optional high static PSC motor
- Optional EC motor
- Optional DualPath™ Slide-Out Coil Pack



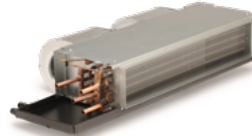
### Innoline® Riser Fan Coil

- 200 to 800 CFM
- 2-pipe or 4-pipe
- Smallest footprint on the market
- Reduced pumping cost
- Standard PSC motor
- Optional EC motor
- Stainless steel drain pan standard



### Inteli-therm™ Vertical Stack Fan Coil

- 200 to 1,200 CFM
- Integrated HRV/ERV module for outside air ventilation
- 2-pipe or 4-pipe
- Slide-out Coil Pack for ease of service
- Optional closed cell or foil faced insulation
- Stainless steel drain pan standard
- Microprocessor controls standard



### Horizontal Ceiling Fan Coil

- 300 to 1,200 CFM
- 2-pipe or 4-pipe
- Optional electric heat (0.5 to 7kW)
- PSC or EC motor options (up to 0.25" ESP)
- 1 to 6-row coil options
- Uncased, cased plenum, cased telescoping recessed, exposed painted cabinet



### Innoline® 50/50 Vertical Stack Fan Coil

- 300 to 1,600 CFM
- 4-pipe compatibility
- Standard PSC motor
- Optional EC motor
- Naturally balanced
- Fan and pump staging



### Hi-Performance Vertical Closet Fan Coil

- 600 to 2,200 CFM
- 2-pipe or 4-pipe
- Optional electric heat (0.5 to 9kW)
- Slide-out motor / blower assembly
- PSC or EC motor options (up to 0.50" ESP)
- Unit mounted piping package
- 1 to 6-row coil options
- Coil can be steam, DX, or hydronic
- Front, bottom or rear return with top or bottom supply



### Hi-Performance Horizontal Ceiling Fan Coil

- 600 to 2,200 CFM
- 2-pipe or 4-pipe
- Optional electric heat (0.5 to 9kW)
- PSC or EC motor options (up to 0.50" ESP)
- 1 to 6-row coil options
- Uncased, cased plenum, cased telescoping recessed, exposed painted cabinet



### Belt Drive Air Handler

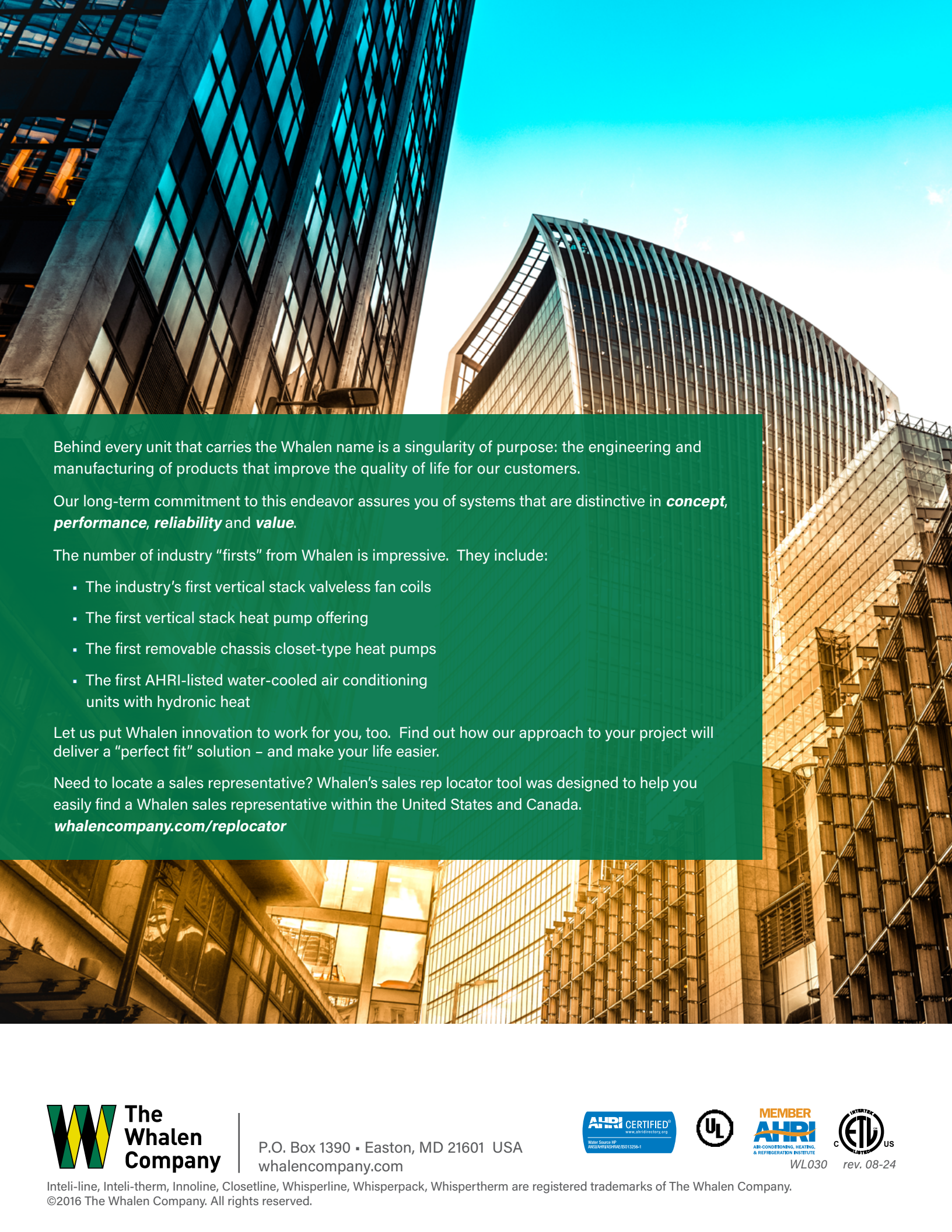
- 800 to 12,000 CFM
- 2-pipe or 4-pipe
- High efficiency VFD ready motors (up to 3.75" ESP)
- Electric duct heat (up to 45kW)
- Up to 10HP motor options with adjustable pitch sheave
- 1 to 10-row coil options
- Single or optional double-wall cabinet design (solid or perforated liner)



### Console Fan Coil

- 200 to 1,200 CFM
- 2-pipe or 4-pipe
- Optional electric heat (1 to 6kW)
- Slide-out motor / blower assembly
- PSC or EC motor options (up to 0.15" ESP)
- 1 to 5-row coil options
- Flat top, slope top, wrap slope top, wall recessed cabinet, concealed
- Lowboy: 400-600 CFM; PSC motor; 1 to 4-row coil; exposed, wall recessed, front discharge





Behind every unit that carries the Whalen name is a singularity of purpose: the engineering and manufacturing of products that improve the quality of life for our customers.

Our long-term commitment to this endeavor assures you of systems that are distinctive in **concept**, **performance**, **reliability** and **value**.

The number of industry “firsts” from Whalen is impressive. They include:

- The industry’s first vertical stack valveless fan coils
- The first vertical stack heat pump offering
- The first removable chassis closet-type heat pumps
- The first AHRI-listed water-cooled air conditioning units with hydronic heat

Let us put Whalen innovation to work for you, too. Find out how our approach to your project will deliver a “perfect fit” solution – and make your life easier.

Need to locate a sales representative? Whalen’s sales rep locator tool was designed to help you easily find a Whalen sales representative within the United States and Canada.

**[whalencompany.com/relocator](http://whalencompany.com/relocator)**



P.O. Box 1390 • Easton, MD 21601 USA  
[whalencompany.com](http://whalencompany.com)



WL030 rev. 08-24