

# Closetline® CAS 0.5 to 5-ton Water Source Heat Pump

## QUICK REFERENCE GUIDE

The Closetline® CAS series from The Whalen Company boasts a compact cabinet, making this heat pump system the perfect solution for commercial retrofit or new construction applications. The Closetline® CAS series far exceeds the ASHRAE 90.1 minimum efficiency and utilizes environmentally friendly R-410A refrigerant to reduce operating costs without compromising the environment. Closetline® water source heat pumps are popular in a variety of building applications where quiet operation in a compact footprint is a key requirement.



Vertical Cabinet Configuration - Electrical data Constant Torque EC Motor				
Size (Tons)	Voltage	HP	MCA	MOPD
CASV*006A***A (0.50)	208-230/1/60	1/4	5.3	15
	265/1/60	1/4	4.8	15
CASV*009A***A (0.75)	208-230/1/60	1/4	7.2	15
	265/1/60	1/4	6.3	15
CASV*0012A***A (1.00)	208-230/1/60	1/4	9.2	15
	265/1/60	1/4	8.0	15
CASV*015A***A (1.25)	208-230/1/60	1/4	8.2	15
	265/1/60	1/4	7.5	15
CASV*018A***A (1.50)	208-230/1/60	1/4	11.8	15
	265/1/60	1/4	11.1	15
CASV*024A***A (2.00)	208-230/1/60	1/2	21.5	30
	265/1/60	1/2	14.5	20
	208-230/3/60	1/2	13.5	20
	460/3/60	1/2	7.6	15
CASV*030A***A (2.50)	208-230/1/60	1/2	22.2	30
	265/1/60	1/2	17.2	20
	208-230/3/60	1/2	15.7	20
CASV*036A***A (3.0)	460/3/60	1/2	8.5	15
	208-230/1/60	1/2	22.2	30
	265/1/60	1/2	18.5	30
CASV*042A***A (3.50)	208-230/3/60	1/2	15.9	20
	460/3/60	1/2	10.2	15
	208-230/1/60	3/4	28.7	40
CASV*048A***A (4.00)	265/1/60	3/4	23.9	30
	208-230/3/60	3/4	23.2	30
	460/3/60	3/4	11.4	15
	208-230/1/60	3/4	33.6	50
CASV*060A***A (5.00)	265/1/60	3/4	24.3	40
	208-230/3/60	3/4	23.4	30
	460/3/60	3/4	11.7	15
CASV*072A***A (6.00)	208-230/1/60	1	39.5	50
	265/1/60	1	30.9	50
	208-230/3/60	1	26.1	40
CASV*072A***A (6.00)	460/3/60	1	15.8	20
	208-230/1/60	1	45.1	50
	265/1/60	Not Available		
CASV*072A***A (6.00)	208-230/3/60	1	31.1	40
	460/3/60	1	16.3	20

Horizontal Cabinet Configuration - Electrical data Constant Torque EC Motor				
Size (Tons)	Voltage	HP	MCA	MOPD
CASH*006A***A (0.50)	208-230/1/60	1/4	5.3	15
	265/1/60	1/4	4.8	15
CASH*009A***A (0.75)	208-230/1/60	1/4	7.2	15
	265/1/60	1/4	6.3	15
CASH*0012A***A (1.00)	208-230/1/60	1/4	9.2	15
	265/1/60	1/4	8.0	15
CASH*015A***A (1.25)	208-230/1/60	1/4	8.2	15
	265/1/60	1/4	7.5	15
CASH*018A***A (1.50)	208-230/1/60	1/4	11.8	15
	265/1/60	1/4	11.1	15
CASH*024A***A (2.00)	208-230/1/60	1/2	21.5	30
	265/1/60	1/2	14.5	20
	208-230/3/60	1/2	13.5	20
	460/3/60	1/2	7.6	15
CASH*030A***A (2.50)	208-230/1/60	1/2	22.2	30
	265/1/60	1/2	17.2	20
	208-230/3/60	1/2	15.7	20
CASH*036A***A (3.0)	460/3/60	1/2	8.5	15
	208-230/1/60	1/2	22.2	30
	265/1/60	1/2	18.5	30
CASH*042A***A (3.50)	208-230/3/60	1/2	15.9	20
	460/3/60	1/2	10.2	15
	208-230/1/60	3/4	28.7	40
CASH*048A***A (4.00)	265/1/60	3/4	23.9	30
	208-230/3/60	3/4	23.2	30
	460/3/60	3/4	11.4	15
	208-230/1/60	3/4	33.6	50
CASH*060A***A (5.00)	265/1/60	3/4	24.3	40
	208-230/3/60	3/4	23.4	30
	460/3/60	3/4	11.7	15
CASH*072A***A (6.00)	208-230/1/60	3/4	39.2	50
	265/1/60	3/4	28.8	40
	208-230/3/60	3/4	25.8	40
CASH*072A***A (6.00)	460/3/60	3/4	13.7	20
	208-230/1/60	1	45.1	50
	265/1/60	Not Available		
CASH*072A***A (6.00)	208-230/3/60	1	31.1	40
	460/3/60	1	16.3	20

Factory and Field Installed Options		
Option	Factory	Field
Constant torque Electronically Commutated (EC) fan motor	●	
Hot gas reheat	●	
Waterside economizer	●	
Hydronic heating	●	
Extended water range package	●	
2 or 3-way motorized water valves	●	●
Water flow regulators & strainers	●	●
Ball type shut-off valves		●
Internal circulating pump	●	
Copper or cupronickel heat exchanger	●	
Epoxy coated air coils	●	
Sound attenuation package	●	
Fused or unfused electrical disconnect	●	
DDC control with native BACnet® protocol	●	
Foil-faced or closed cell insulation	●	
MERV 8, MERV 11, or MERV 13 filters	●	
Digital or WiFi enabled thermostats		●
Fire rated stainless steel hoses		●
Remote sensors		●
Electric duct heater		●

Unit features
High efficiency compact cabinet
Stainless steel drain pan
Reconfigurable discharge air outlet location
Bottom service access (horizontal units only)
Removable control box
LED sight glass
Condensate overflow sensor
Solid-state unit control with nine safeties

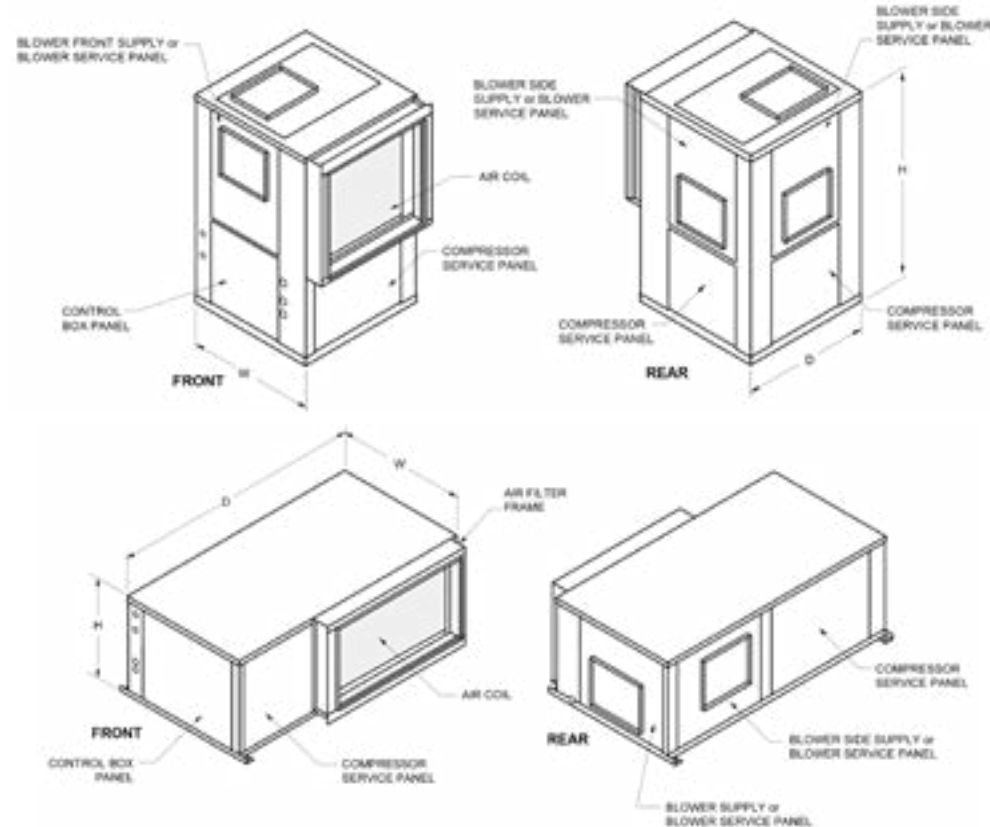


# Closestline® CAS 0.5 to 6-ton Performance Ratings - EC Motor

Model	CFM	GPM	Water Loop Heat Pump				Ground Loop Heat Pump			
			Cooling 86°F		Heating 68°F		Cooling 77°F		Heating 32°F	
			Capacity Btuh	EER Btuh / W	Capacity Btuh	COP	Capacity Btuh	EER Btuh / W	Capacity Btuh	COP
CAS**006A	200	2	6,000	17.0	7,500	5.6	6,300	19.0	4,600	4.0
CAS**009A	300	2.5	9,000	14.0	11,500	4.4	9,300	15.5	7,000	3.4
CAS**012A	400	3	12,500	12.7	15,000	4.1	13,000	14.5	10,000	3.4
CAS**015A	500	3.8	15,000	17.0	18,000	5.6	15,000	19.0	12,000	4.0
CAS**018A	600	4.5	18,000	17.0	21,600	5.6	18,500	19.0	13,500	4.0
CAS**024A	800	6.0	24,000	16.4	28,000	5.2	25,000	18.5	17,000	3.7
CAS**030A	1000	7.5	30,000	16.0	34,000	4.6	30,000	17.5	23,000	3.6
CAS**036A	1200	9.0	36,000	17.0	43,000	5.0	36,000	19.0	28,000	3.6
CAS**042A	1400	10.5	42,000	15.0	49,000	4.6	43,000	17.0	33,000	3.5
CAS**048A	1600	12.0	48,000	15.0	56,000	4.6	49,000	17.0	35,000	3.5
CAS**060A	2000	15.0	58,000	15.0	72,000	4.6	59,000	17.0	49,000	3.5
CAS**072A	2200	18.0	71,000	15.0	78,000	4.2	72,000	17.0	53,000	3.0

Model	Overall Cabinet			Weight
	W	D	H	
CASV*006	19.00	19.00	24.00	135
CASV*009	19.00	19.00	24.00	138
CASV*012	19.00	19.00	24.00	140
CASV*015	22.00	22.00	36.00	185
CASV*018	22.00	22.00	36.00	195
CASV*024	22.00	22.00	40.00	235
CASV*030	25.00	26.00	40.00	255
CASV*036	25.00	26.00	45.00	280
CASV*042	25.00	26.00	45.00	290
CASV*048	25.00	32.00	45.00	320
CASV*060	25.00	32.00	45.00	340
CASV*072	26.00	32.00	61.00	450

Model	Overall Cabinet			Weight
	W	D	H	
CASH*006	20.00	11.50	34.00	125
CASH*009	20.00	11.50	34.00	128
CASH*012	20.00	11.50	34.00	130
CASH*015	22.00	17.00	43.00	180
CASH*018	22.00	17.00	43.00	190
CASH*024	22.00	17.00	45.00	230
CASH*030	22.00	17.00	45.00	235
CASH*036	22.00	19.00	55.00	280
CASH*042	22.00	22.00	55.00	320
CASH*048	25.00	22.00	55.00	325
CASH*060	25.00	22.00	55.00	340
CASH*072	28.00	24.00	67.00	400



P.O. Box 1390 • Easton, MD 21601 USA  
 Tel. 410-822-9200 • Fax: 410-822-8926  
[www.whalencompany.com](http://www.whalencompany.com)

Closestline is a registered trademark of The Whalen Company. ©2016 The Whalen Company. All rights reserved.

