

# Closetline® WC Compact 1-Stage 0.5 to 5-ton Water Source Heat Pump

## QUICK REFERENCE GUIDE

The Closetline® WC series from The Whalen Company boasts a compact cabinet, making this heat pump system the perfect solution for commercial retrofit or new construction applications. The Closetline® WC series far exceeds the ASHRAE 90.1 minimum efficiency and utilizes environmentally friendly R-454B refrigerant to reduce operating costs without compromising the environment. Closetline® water source heat pumps are popular in a variety of building applications where quiet operation in a compact footprint is a key requirement.



Vertical Cabinet Configuration - Electrical data Constant Torque EC Motor				
Size (Tons)	Voltage	HP	MCA	MOPD
WCV*006***T (0.50)	208-230/60/1	-	6.9	15
	265/60/1	-	5.6	15
WCV*009***T (0.75)	208-230/60/1	-	8.6	15
	265/60/1	-	6.8	15
WCV*012***T (1.00)	208-230/60/1	-	9.3	15
	265/60/1	-	7.6	15
WCV*015***T (1.25)	208-230/60/1	-	10.9	15
	265/60/1	-	8.2	15
WCV*018***T (1.50)	208-230/60/1	-	11.4	15
	265/60/1	-	10.0	15
WCV*024***T (2.00)	208-230/60/1	-	18.2	25
	265/60/1	-	16.6	25
	460/60/3	-	13.5	20
WCV*030***T (2.50)	208-230/60/3	-	6.0	15
	208-230/60/1	-	19.8	30
	265/60/1	-	18.1	25
WCV*036***T (3.0)	460/60/3	-	15.9	25
	208-230/60/3	-	6.8	15
	208-230/60/1	-	24.0	30
WCV*042***T (3.50)	265/60/1	-	24.5	35
	460/60/3	-	17.3	25
	208-230/60/3	-	6.8	15
WCV*048***T (4.00)	208-230/60/1	-	27.6	40
	460/60/3	-	22.0	30
	208-230/60/3	-	9.0	15
WCV*060***T (5.00)	208-230/60/1	-	34.0	50
	460/60/3	-	22.0	30
	208-230/60/3	-	9.2	15
WCV*060***T (5.00)	208-230/60/1	-	37.0	60
	460/60/3	-	27.4	40
	208-230/60/3	-	11.2	15

Horizontal Cabinet Configuration - Electrical data Constant Torque EC Motor				
Size (Tons)	Voltage	HP	MCA	MOPD
WCH*006***T (0.50)	208-230/60/1	-	6.9	15
	265/60/1	-	5.6	15
WCH*009***T (0.75)	208-230/60/1	-	8.6	15
	265/60/1	-	6.8	15
WCH*012***T (1.00)	208-230/60/1	-	9.3	15
	265/60/1	-	7.6	15
WCH*015***T (1.25)	208-230/60/1	-	10.9	15
	265/60/1	-	8.2	15
WCH*018***T (1.50)	208-230/60/1	-	11.4	15
	265/60/1	-	10.0	15
WCH*024***T (2.00)	208-230/60/1	-	18.2	25
	265/60/1	-	16.6	25
	460/60/3	-	13.5	20
WCH*030***T (2.50)	208-230/60/3	-	6.0	15
	208-230/60/1	-	19.8	30
	265/60/1	-	18.1	25
WCH*036***T (3.0)	460/60/3	-	15.9	25
	208-230/60/3	-	6.8	15
	208-230/60/1	-	24.0	30
WCH*042***T (3.50)	265/60/1	-	24.5	35
	460/60/3	-	17.3	25
	208-230/60/3	-	6.8	15
WCH*048***T (4.00)	208-230/60/1	-	27.6	40
	460/60/3	-	22.0	30
	208-230/60/3	-	9.0	15
WCH*060***T (5.00)	208-230/60/1	-	34.0	50
	460/60/3	-	22.0	30
	208-230/60/3	-	9.2	15
WCH*060***T (5.00)	208-230/60/1	-	37.0	60
	460/60/3	-	27.4	40
	208-230/60/3	-	11.2	15

Factory and Field Installed Options		
Option	Factory	Field
Constant torque Electronically Commutated (EC) fan motor	●	
Extended water range package	●	
2 or 3-way motorized water valves		●
Water flow regulators & strainers		●
Ball type shut-off valves		●
Internal circulating pump		●
Copper or cupronickel heat exchanger	●	
Epoxy coated air coils	●	
Sound attenuation package	●	
Fused or unfused electrical disconnect	●	
DDC control with native BACnet® protocol	●	
Foil-faced or closed cell insulation	●	
MERV 8, MERV 11, or MERV 13 filters		●
Digital or WiFi enabled thermostats		●
Fire rated stainless steel hoses		●
Remote sensors		●
Electric duct heater		●

Unit features
High efficiency compact cabinet
Stainless steel drain pan
Reconfigurable discharge air outlet location
Removable control box
LED sight glass
Condensate overflow sensor
Solid-state unit control with nine safeties



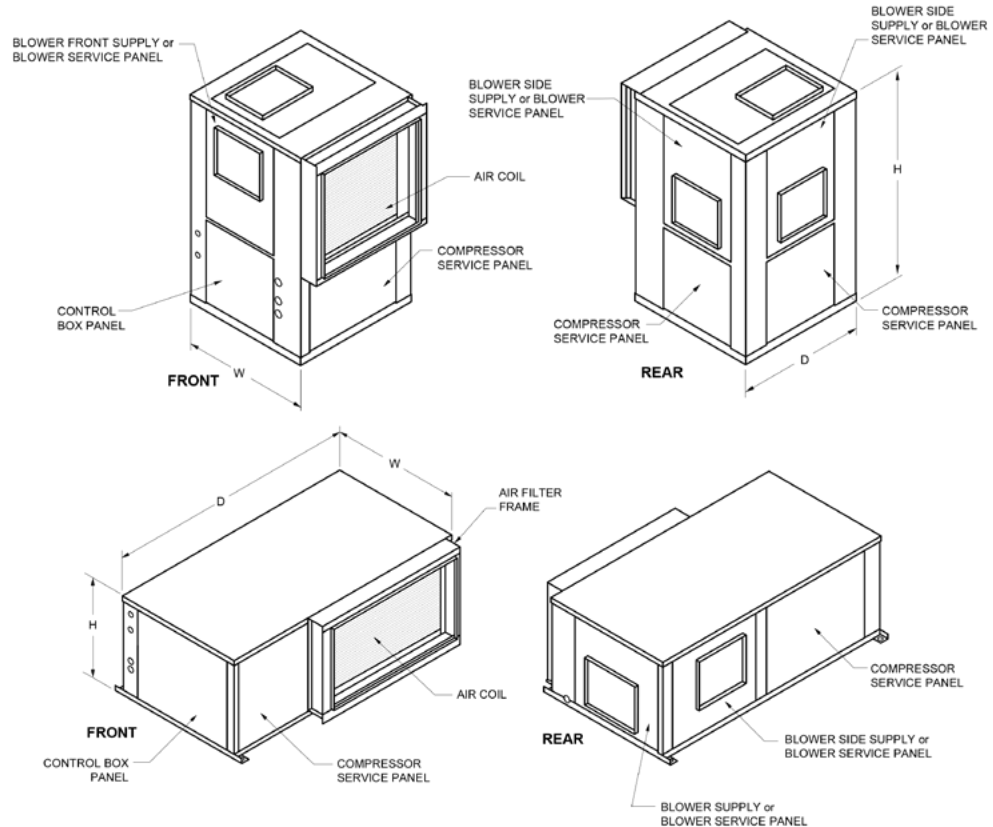
# Closetline® WC Compact 1-stage 0.5 to 6-ton Performance Ratings - EC Motor



Model	CFM	GPM	Water Loop Heat Pump				Ground Loop Heat Pump			
			Cooling 86°F		Heating 68°F		Cooling 77°F		Heating 32°F	
			Capacity Btuh	EER Btuh / W	Capacity Btuh	COP	Capacity Btuh	EER Btuh / W	Capacity Btuh	COP
WC**006	225	1.5	6,100	15.0	8,300	5.1	6,400	17.7	4,800	3.3
WC**009	325	2.3	8,600	14.3	11,600	4.5	9,000	16.7	7,200	3.3
WC**012	380	3.0	10,700	13.4	14,400	4.6	11,500	14.9	9,300	3.3
WC**015	525	3.8	14,700	16.4	15,900	4.9	15,200	17.3	10,700	3.6
WC**018	600	4.5	18,000	15.0	21,500	5.1	19,400	17.3	13,800	3.6
WC**024	800	6.0	24,900	15.4	28,500	5.1	25,800	18.0	19,000	3.7
WC**030	1000	7.5	29,200	14.5	35,000	4.8	30,500	17.3	23,000	3.6
WC**036	1150	9.0	35,200	15.3	43,500	4.8	36,400	17.4	27,900	3.6
WC**042	1400	10.5	41,800	15.2	48,500	4.9	43,400	17.4	31,700	3.5
WC**048	1550	12.0	48,900	15.2	57,500	4.8	50,800	17.6	38,100	3.5
WC**060	2000	15.0	60,200	14.7	68,000	4.7	62,200	17.4	44,300	3.5

Model	Overall Cabinet			Weight
	W	D	H	
WCV*006	19.10	19.00	22.00	103
WCV*009	19.10	19.00	22.00	105
WCV*012	19.10	19.00	22.00	114
WCV*015	21.60	21.50	40.00	153
WCV*018	21.60	21.50	40.00	158
WCV*024	21.60	21.50	40.00	189
WCV*030	21.60	21.50	40.00	197
WCV*036	21.60	26.00	45.00	203
WCV*042	21.60	26.00	45.00	218
WCV*048	25.50	29.30	50.50	315
WCV*060	25.50	29.30	50.50	330

Model	Overall Cabinet			Weight
	W	D	H	
WCH*006	19.10	34.10	11.10	103
WCH*009	19.10	34.10	11.10	105
WCH*012	19.10	34.10	11.10	114
WCH*015	20.10	43.00	17.00	153
WCH*018	20.10	43.00	17.00	158
WCH*024	20.10	43.00	18.30	174
WCH*030	20.10	43.00	18.30	182
WCH*036	20.10	47.10	21.00	203
WCH*042	20.10	47.10	21.00	218
WCH*048	24.10	54.10	21.00	263
WCH*060	24.10	54.10	21.00	278



P.O. Box 1390 • Easton, MD 21601 USA  
 Tel. 410-822-9200 • Fax: 410-822-8926  
[www.whalencompany.com](http://www.whalencompany.com)

Closetline is a registered trademark of The Whalen Company. ©2016 The Whalen Company. All rights reserved.

