

Closetline® WR mid-size 1-stage 0.5 to 5-ton Performance Ratings

QUICK REFERENCE GUIDE

The Closetline® WR series from The Whalen Company boasts a mid-size cabinet, making this heat pump system the perfect solution for commercial retrofit or new construction applications. The Closetline® WR series far exceeds the ASHRAE 90.1 minimum efficiency and utilizes environmentally friendly R-454B refrigerant to reduce operating costs without compromising the environment. Closetline® water source heat pumps are popular in a variety of building applications where quiet operation in a compact footprint is a key requirement.



Vertical Cabinet Configuration - Electrical data Constant Torque EC Motor				
Size (Tons)	Voltage	HP	MCA	MOPD
WRV*006***T (0.50)	208-230/60/1	-	5.4	15
	265/60/1	-	5.1	15
WRV*009***T (0.75)	208-230/60/1	-	6.8	15
	265/60/1	-	6.2	15
WRV*012***T (1.00)	208-230/60/1	-	9.3	15
	265/60/1	-	7.3	15
WRV*015***T (1.25)	208-230/60/1	-	10.9	15
	265/60/1	-	8.2	15
WRV*018***T (1.50)	208-230/60/1	-	11.4	15
	265/60/1	-	10.0	15
WRV*024***T (2.00)	208-230/60/1	-	18.2	25
	265/60/1	-	16.6	25
	460/60/3	-	13.5	20
WRV*030***T (2.50)	208-230/60/3	-	6.0	15
	208-230/60/1	-	19.8	30
	265/60/1	-	18.1	25
WRV*036***T (3.0)	460/60/3	-	15.9	25
	208-230/60/3	-	6.8	15
	208-230/60/1	-	24.0	30
WRV*042***T (3.50)	265/60/1	-	24.5	35
	460/60/3	-	17.3	25
	208-230/60/3	-	6.8	15
WRV*048***T (4.00)	208-230/60/1	-	27.6	40
	460/60/3	-	22.0	30
	208-230/60/3	-	9.0	15
WRV*060***T (5.00)	208-230/60/1	-	34.0	50
	460/60/3	-	22.0	30
	208-230/60/3	-	9.2	15
WRV*060***T (5.00)	208-230/60/1	-	37.0	60
	460/60/3	-	27.4	40
	208-230/60/3	-	11.2	15

Horizontal Cabinet Configuration - Electrical data Constant Torque EC Motor				
Size (Tons)	Voltage	HP	MCA	MOPD
WRH*006***T (0.50)	208-230/60/1	-	5.4	15
	265/60/1	-	5.1	15
WRH*009***T (0.75)	208-230/60/1	-	6.8	15
	265/60/1	-	6.2	15
WRH*012***T (1.00)	208-230/60/1	-	9.3	15
	265/60/1	-	7.3	15
WRH*015***T (1.25)	208-230/60/1	-	10.9	15
	265/60/1	-	8.2	15
WRH*018***T (1.50)	208-230/60/1	-	11.4	15
	265/60/1	-	10.0	15
WRH*024***T (2.00)	208-230/60/1	-	18.2	25
	265/60/1	-	16.6	25
	460/60/3	-	13.5	20
WRH*030***T (2.50)	208-230/60/3	-	6.0	15
	208-230/60/1	-	19.8	30
	265/60/1	-	18.1	25
WRH*036***T (3.0)	460/60/3	-	15.9	25
	208-230/60/3	-	6.8	15
	208-230/60/1	-	24.0	30
WRH*042***T (3.50)	265/60/1	-	24.5	35
	460/60/3	-	17.3	25
	208-230/60/3	-	6.8	15
WRH*048***T (4.00)	208-230/60/1	-	27.6	40
	460/60/3	-	22.0	30
	208-230/60/3	-	9.0	15
WRH*060***T (5.00)	208-230/60/1	-	34.0	50
	460/60/3	-	22.0	30
	208-230/60/3	-	9.2	15
WRH*060***T (5.00)	208-230/60/1	-	37.0	60
	460/60/3	-	27.4	40
	208-230/60/3	-	11.2	15

Factory and Field Installed Options		
Option	Factory	Field
Constant torque Electronically Commutated (EC) fan motor	●	
Waterside economizer	●	
Hydronic heating	●	
Extended water range package	●	
2 or 3-way motorized water valves	●	●
Water flow regulators & strainers	●	●
Ball type shut-off valves		●
Internal circulating pump	●	
Copper or cupronickel heat exchanger	●	
Epoxy coated air coils	●	
Sound attenuation package	●	
Fused or unfused electrical disconnect	●	
DDC control with native BACnet® protocol	●	
Foil-faced or closed cell insulation	●	
MERV 8, MERV 11, or MERV 13 filters		●
Digital or WiFi enabled thermostats		●
Fire rated stainless steel hoses		●
Remote sensors		●
Electric duct heater		●

Unit features
High efficiency compact cabinet
Stainless steel drain pan
Reconfigurable discharge air outlet location
Bottom service access (horizontal units only)
Removable control box
LED sight glass
Condensate overflow sensor
Solid-state unit control with nine safeties



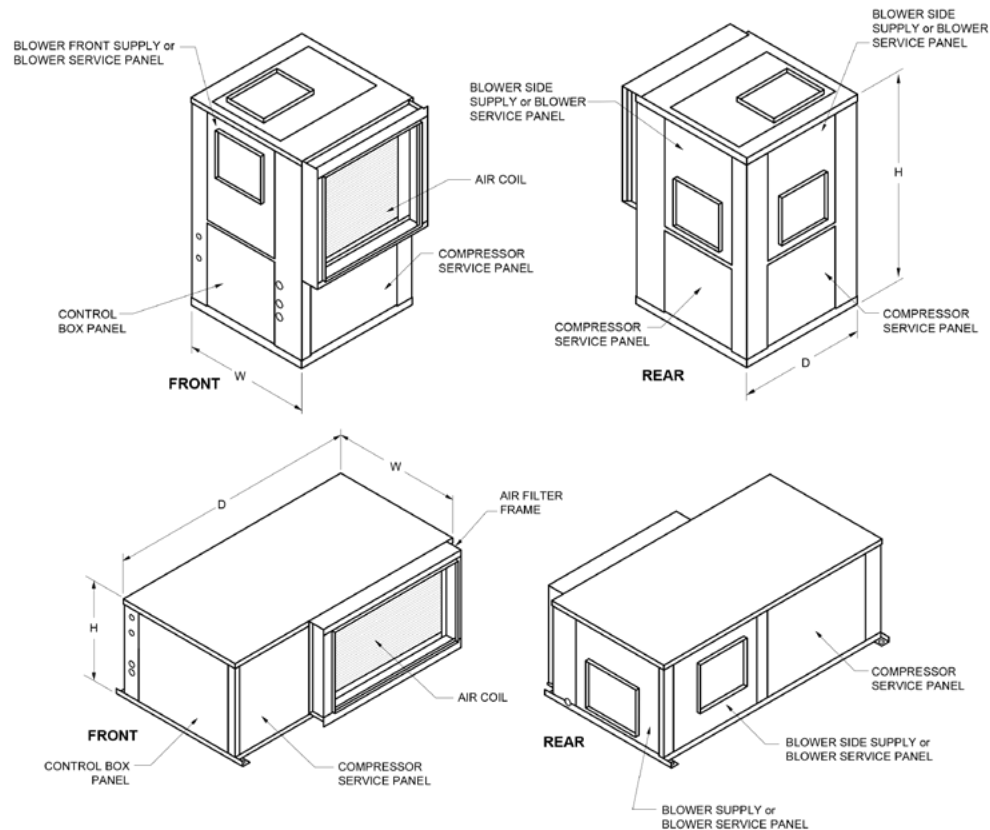
Closetline® WR mid-size 1-stage 0.5 to 5-ton Performance Ratings - EC Motor

Model	CFM	GPM	Water Loop Heat Pump				Ground Loop Heat Pump			
			Cooling 86°F		Heating 68°F		Cooling 77°F		Heating 32°F	
			Capacity Btuh	EER Btuh / W	Capacity Btuh	COP	Capacity Btuh	EER Btuh / W	Capacity Btuh	COP
WR**006	225	1.5	6,100	15.0	8,300	5.1	6,400	17.7	4,800	3.3
WR**009	325	2.3	8,600	14.3	11,600	4.5	9,000	16.7	7,200	3.3
WR**012	380	3.0	10,700	13.4	14,400	4.6	11,500	14.9	9,300	3.3
WR**015	525	3.8	14,700	16.4	15,900	4.9	15,200	17.3	10,700	3.6
WR**018	600	4.5	18,000	15.0	21,500	5.1	19,400	17.3	13,800	3.6
WR**024	800	6.0	24,900	15.4	28,500	5.1	25,800	18.0	19,000	3.7
WR**030	1000	7.5	29,200	14.5	35,000	4.8	30,500	17.3	23,000	3.6
WR**036	1150	9.0	35,200	15.3	43,500	4.8	36,400	17.4	27,900	3.6
WR**042	1400	10.5	41,800	15.2	48,500	4.9	43,400	17.4	31,700	3.5
WR**048	1550	12.0	48,900	15.2	57,500	4.8	50,800	17.6	38,100	3.5
WR**060	2000	15.0	60,200	14.7	68,000	4.7	62,200	17.4	44,300	3.5



Model	Overall Cabinet			Weight
	W	D	H	
WRV*006	22.50	21.30	22.00	110
WRV*009	22.50	21.30	22.00	112
WRV*012	22.50	21.30	22.00	121
WRV*015	22.50	22.50	40.00	163
WRV*018	22.50	22.50	40.00	168
WRV*024	22.49	22.46	40.00	216
WRV*030	22.49	22.46	40.00	224
WRV*036	22.49	26.05	45.00	245
WRV*042	22.49	26.05	45.00	260
WRV*048	25.49	29.30	50.50	315
WRV*060	25.49	29.30	50.50	330

Model	Overall Cabinet			Weight
	W	D	H	
WRH*006	22.50	40.30	11.10	110
WRH*009	22.50	40.30	11.10	112
WRH*012	22.50	40.30	11.10	121
WRH*015	22.40	48.30	17.00	163
WRH*018	22.40	48.30	17.00	168
WRH*024	22.46	48.43	18.25	208
WRH*030	22.46	48.43	18.25	208
WRH*036	22.46	53.29	21.00	233
WRH*042	22.46	53.29	21.00	244
WRH*048	25.46	68.04	21.00	299
WRH*060	25.46	68.04	21.00	314



P.O. Box 1390 • Easton, MD 21601 USA
 Tel. 410-822-9200 • Fax: 410-822-8926
www.whalencompany.com

Closetline is a registered trademark of The Whalen Company. ©2016 The Whalen Company. All rights reserved.

