

Closetline® WZ mid-size 2-stage 0.5 to 5-ton Water Source Heat Pump

QUICK REFERENCE GUIDE

The Closetline® WZ series from The Whalen Company boasts a mid-size cabinet, making this heat pump system the perfect solution for commercial retrofit or new construction applications. The Closetline® WZ series far exceeds the ASHRAE 90.1 minimum efficiency and utilizes environmentally friendly R-454B refrigerant to reduce operating costs without compromising the environment. Closetline® water source heat pumps are popular in a variety of building applications where quiet operation in a mid-size footprint is a key requirement.



Vertical Cabinet Configuration - Electrical data Constant Volume EC Motor				
Size (Tons)	Voltage	HP	MCA	MOPD
WZV*024**** (2.00)	208-230/60/1	-	17.1	25
	208-230/60/3	-	12.1	15
	460/60/3	-	8.2	15
WZV*030**** (2.50)	208-230/60/1	-	22.5	30
	208-230/60/3	-	14.1	20
	460/60/3	-	13.4	20
WZV*036**** (3.0)	208-230/60/1	-	24.2	30
	208-230/60/3	-	16.7	20
	460/60/3	-	10.4	15
WZV*042**** (3.50)	208-230/60/1	-	28.7	45
	208-230/60/3	-	20.3	30
	460/60/3	-	12.9	15
WZV*048**** (4.00)	208-230/60/1	-	28.8	45
	208-230/60/3	-	19.9	30
	460/60/3	-	13.3	15
WZV*060**** (5.00)	208-230/60/1	-	35.4	50
	208-230/60/3	-	25.0	30
	460/60/3	-	14.1	15

Horizontal Cabinet Configuration - Electrical data Constant Volume EC Motor				
Size (Tons)	Voltage	HP	MCA	MOPD
WZH*024**** (2.00)	208-230/60/1	-	17.1	25
	208-230/60/3	-	12.1	15
	460/60/3	-	8.2	15
WZH*030**** (2.50)	208-230/60/1	-	22.5	30
	208-230/60/3	-	14.1	20
	460/60/3	-	13.4	20
WZH*036**** (3.0)	208-230/60/1	-	24.2	30
	208-230/60/3	-	16.7	20
	460/60/3	-	10.4	15
WZH*042**** (3.50)	208-230/60/1	-	28.7	45
	208-230/60/3	-	20.3	30
	460/60/3	-	12.9	15
WZH*048**** (4.00)	208-230/60/1	-	28.8	45
	208-230/60/3	-	19.9	30
	460/60/3	-	13.3	15
WZH*060**** (5.00)	208-230/60/1	-	35.4	50
	208-230/60/3	-	25.0	30
	460/60/3	-	14.1	15

Factory and Field Installed Options		
Option	Factory	Field
Constant torque Electronically Commutated (EC) fan motor	●	
Extended water range package	●	
2 or 3-way motorized water valves	●	●
Water flow regulators & strainers	●	●
Ball type shut-off valves		●
Internal circulating pump	●	
Copper or cupronickel heat exchanger	●	
Epoxy coated air coils	●	
Sound attenuation package	●	
Fused or unfused electrical disconnect	●	
DDC control with native BACnet® protocol	●	
Foil-faced or closed cell insulation	●	
MERV 8, MERV 11, or MERV 13 filters		●
Digital or WiFi enabled thermostats		●
Fire rated stainless steel hoses		●
Remote sensors		●
Electric duct heater		●

Vertical Cabinet Configuration - Electrical data Constant Volume EC Motor & Motorized water Valve				
Size (Tons)	Voltage	HP	MCA	MOPD
WZV*024**** (2.00)	208-230/60/1	-	17.1	25
	208-230/60/3	-	12.1	15
	460/60/3	-	8.2	15
WZV*030**** (2.50)	208-230/60/1	-	22.5	30
	208-230/60/3	-	14.1	20
	460/60/3	-	13.4	20
WZV*036**** (3.0)	208-230/60/1	-	24.2	30
	208-230/60/3	-	16.7	20
	460/60/3	-	10.4	15
WZV*042**** (3.50)	208-230/60/1	-	28.7	45
	208-230/60/3	-	20.3	30
	460/60/3	-	12.9	15

Horizontal Cabinet Configuration - Electrical data Constant Volume EC Motor & Motorized water Valve				
Size (Tons)	Voltage	HP	MCA	MOPD
WZH*024**** (2.00)	208-230/60/1	-	17.1	25
	208-230/60/3	-	12.1	15
	460/60/3	-	8.2	15
WZH*030**** (2.50)	208-230/60/1	-	22.5	30
	208-230/60/3	-	14.1	20
	460/60/3	-	13.4	20
WZH*036**** (3.0)	208-230/60/1	-	24.2	30
	208-230/60/3	-	16.7	20
	460/60/3	-	10.4	15
WZH*042**** (3.50)	208-230/60/1	-	28.7	45
	208-230/60/3	-	20.3	30
	460/60/3	-	12.9	15

Unit features
High efficiency compact cabinet
Stainless steel drain pan
Reconfigurable discharge air outlet location
Bottom service access (horizontal units only)
Removable control box
LED sight glass
Condensate overflow sensor
Solid-state unit control with nine safeties



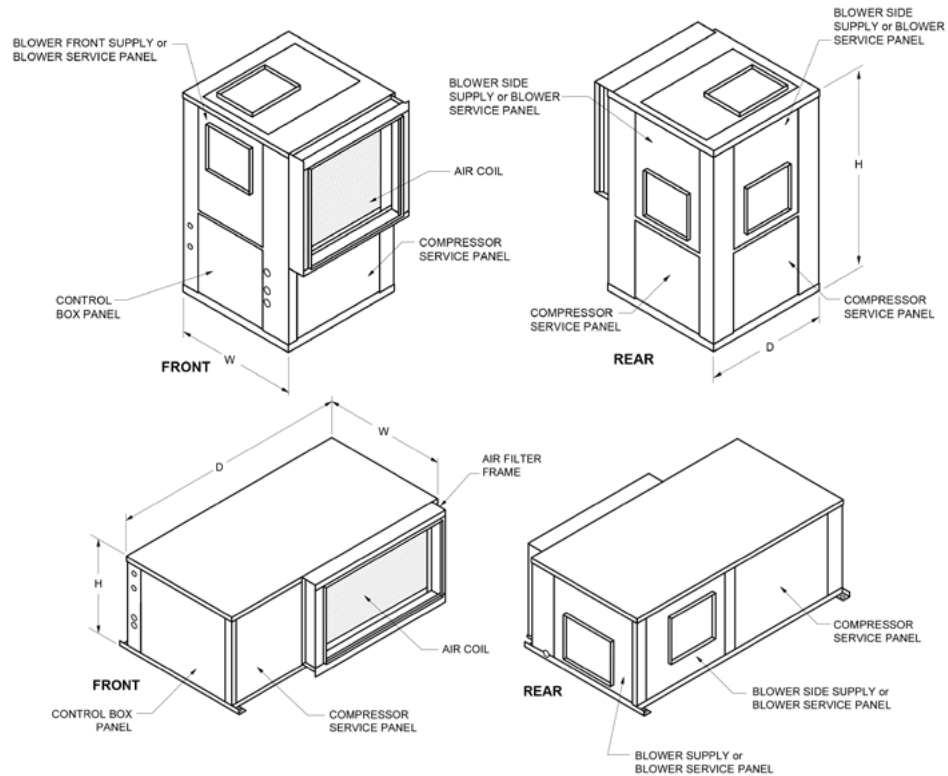
Closetline® WZ mid-size 2-stage 0.5 to 5-ton Performance Ratings - EC Motor

Model	CFM	GPM	Water Loop Heat Pump				Ground Loop Heat Pump			
			Cooling 86°F		Heating 68°F		Cooling 77°F		Heating 32°F	
			Capacity Btuh	EER Btuh / W	Capacity Btuh	COP	Capacity Btuh	EER Btuh / W	Capacity Btuh	COP
WZ**024 - Full	800	6.0	24,000	15.1	28,400	5.3	25,000	18.0	18,400	3.9
WZ**030 - Full	900	7.5	28,700	14.0	33,200	4.6	30,200	16.3	23,200	3.6
WZ**036 - Full	1150	9.0	35,000	14.0	44,200	4.6	36,400	16.4	28,600	3.6
WZ**042 - Full	1350	10.5	43,000	15.5	49,500	4.7	44,500	17.3	32,500	3.5
WZ**048 - Full	1250	12.0	47,500	15.5	55,000	4.8	49,000	17.7	36,000	3.7
WZ**060 - Full	1900	10.5	59,000	15.5	67,200	5.0	61,500	17.8	44,600	3.7
WZ**024 - Part	600	4.3	17,500	17.0	19,900	5.7	19,300	25.3	14,600	4.2
WZ**030 - Part	750	5.5	21,200	15.2	24,400	5.1	23,400	22.0	18,700	4.0
WZ**036 - Part	950	6.8	26,100	16.1	31,600	5.3	28,500	22.6	22,600	4.1
WZ**042 - Part	1050	8.5	32,500	17.0	36,000	5.1	35,000	23.5	26,400	4.0
WZ**048 - Part	1550	8.5	34,000	16.5	39,000	5.5	37,000	24.0	28,000	4.0
WZ**060 - Part	1900	15.0	42,000	17.5	47,300	5.5	45,500	24.9	34,000	4.2



Model	Overall Cabinet			Weight
	W	D	H	
WZV*024	22.5	22.5	40.0	189
WZV*030	22.5	22.5	40.0	197
WZV*036	22.5	26.0	45.0	203
WZV*042	22.5	26.0	45.0	218
WZV*048	25.5	29.3	50.5	315
WZV*060	25.5	29.3	50.5	330

Model	Overall Cabinet			Weight
	W	D	H	
WZH*024	22.5	48.4	18.3	174
WZH*030	22.5	48.4	18.3	182
WZH*036	22.5	53.3	21.0	203
WZH*042	22.5	53.3	21.0	218
WZH*048	25.5	68.0	21.0	263
WZH*060	25.5	68.0	21.0	278



P.O. Box 1390 • Easton, MD 21601 USA
 Tel. 410-822-9200 • Fax: 410-822-8926
www.whalencompany.com

Closetline is a registered trademark of The Whalen Company. ©2016 The Whalen Company. All rights reserved.

